



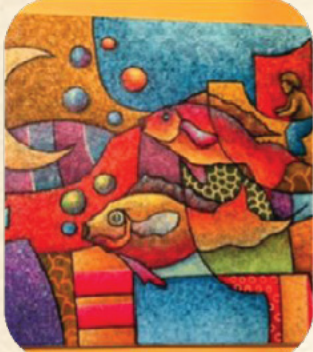
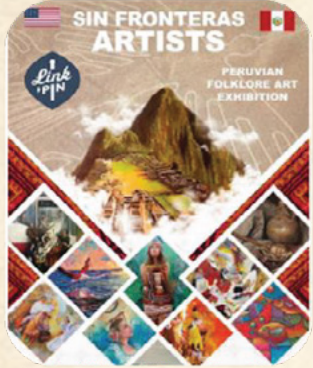
ANNUAL REPORT

2025

The snake image is a rendering of Blue Rattle Snake by artist Leonardo Linares, Ciudad de Mexico, Mexico
A.V. Shirk Collection, Featured in AFFA display at the IBC Bank – Austin, May – early December 2025

Creativity, Cultures, and Connections

Austin Friends of Folk Art collaborated with folk artists, a public library, businesses, a university, and other arts organizations to celebrate folk art in eight different venues.



AFFA staffed an exhibit at Fiesta Reclamada, a revitalized celebration of Austin's rich cultural heritage, featuring contemporary music, dance, and visual arts. AFFA sold folk art items and connected with members and supporters.

May 2025



Scan the QR code to hear KUT Public Radio talk about the Peruvian artists exhibit at Link & Pin, a powerful example of community built through art exchange.

February – March 2025



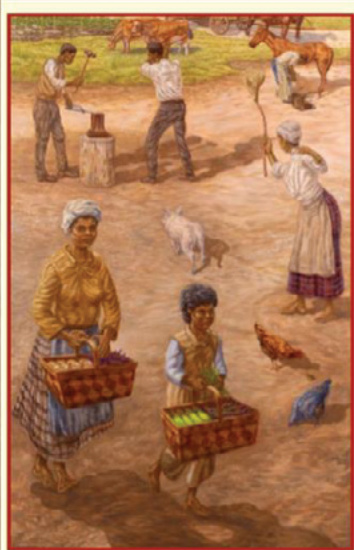
With partners the Georgetown Cultural Citizen Memorial Association and the Georgetown Public Library, AFFA exhibited African masks at the "Reflections of Heritage: A Tapestry of African American Art" exhibit. The AFFA masks are from the Dan Przybylski Collection, the Mark and Ann McKinnon Collection, and the Shelley Jaffe Collection. The program also included original works from 11 African American artists from Central Texas.

April 15 – June 1, 2025



AFFA coordinated with IBC Bank Austin to display a Moshambooy Mask from the Democratic Republic of the Congo and the Susan Bassion Collection, a Blue Rattle Snake from Mexico and the A.V. Shirk Collection, and the Huipil from Guatemala and the Susannah Willms Collection.

May – December 2025



Artist Fidencio Duran led AFFA members on a tour of the Give Us this Day murals at the NeillCochran House Museum.

August 2025



shalomaustin.org
gallery
 LOBY SHIRK GALLERY

Voces: Arte del Pueblo
Through December 17, 2025

Registration Required to Visit
shalomaustin.org/visualarts



In celebration of National Hispanic Heritage Month, AFFA exhibited textiles, alebrijes, huipils, and masks from Mexican and Latin American folk artists at the Voces: Arte del Pueblo at the Jewish Community Center in Austin, Texas. This collaboration included the Visual Arts League/Jewish Community Center, Austin Friends of Folk Art, The Folk Art Museum of Central Texas, and Austin PBS. Former AFFA President Merry Wheaton gave a presentation that illustrated her passion for folk art collection.

September 8 – December 17, 2025

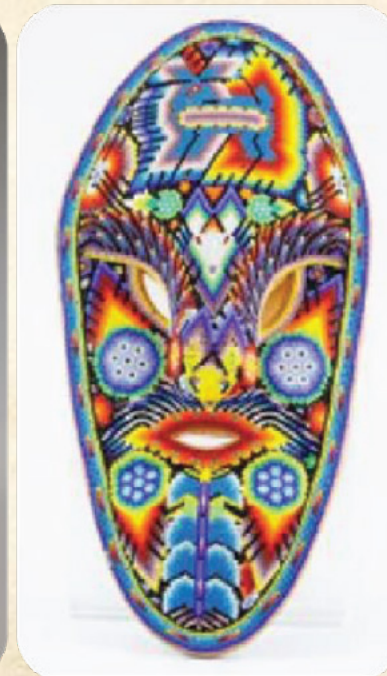


AFFA brought four alebrijes to the Fairy Houses in Nature workshops at Bulverde Oaks Nature Preserve in San Antonio, Texas. We worked with the Green Spaces Alliance of South Texas to celebrate Mexican folk art, honor nature, and educate our community. Families gathered to learn about alebrijes and decorate the AFFA playhouse. The alebrijes are from the Tom and Liba Cohen Collection.



November 2025

AFFA and the Folk Art Museum of Central Texas partnered with the Ballard Institute and Museum of Puppetry at the University of Connecticut to present the Somos Uno: Mexican and Mexican American Puppetry Exhibit. This installation showcases puppets, masks, toy theaters, calaveras and other performing objects from preColumbian times to the present, to understand the roots, hardships, and power of a culture uniting to thrive as one. The exhibition features historical work by Rosete Aranda, Cueto Family, and Pedro Linares and contemporary works by El Teatro Campesino, Pablo Cueto, Edwin Salas, Lormíga Titeres, Teatro del Gato, and Alejandro Benítez.



AFFA shared 12 folk art masks from the Susan Bassion Collection, the Win and Janet Carrick Collection, the Jean Mikeska Collection, and the Dan Przybylski Collection.

November 2025 - March 2026

AFFA by the Numbers – 2025

9,500

Daily Online Museum Visitors

The general public, libraries, and universities continue to use the Folk Art Museum of Central Texas to locate folk art from across the globe.

1,031

Folk art items in the AFFA permanent museum collection - representing 31 countries from Argentina to Zimbabwe. Additionally, the AFFA permanent collection includes 1,300 folk art books valued at \$13,250.

9

New Folk Art Donors This Year

Barbara von Merz
Cecilia Cook
Chelsea Robertson
Ed Jordan
Leslie and Miye Cohen
Meta Butler Hunt
Shelley Jaffe
Susan Sternberg
Tom and Liba Stillman

These donations included folk art from Africa, Korea, Mexico, and Panama, as well as more than 200 books.

516

Distribution List Names

A special thank you to the What's Up newsletter editor and AFFA website designer/administrator

Gloria Mata Pennington,
Immediate Past President What's Up
Editor

Paula Munguia,
Web Administrator/Editor

8

Board Members

Amalia Rodriguez
Mendoza, President
Jim Huff, VP/Treasurer
Audrey Selden, Secretary
Carmen Guerra,
Membership
Carol Hayman
Charles Peveto
Janet Hutchison
Rosa Rios Valdez

\$231,788

Estimated value of AFFA permanent collection – folk art and books; AFFA Bank Balance has been steady the past three years with a \$51,216 balance as of December 2025.



2025 Austin Friends of Folk Art Supporters
Thank you for your generosity.

Adriana Menchaca
Austin PBS

Ballard Institute and Museum of Puppetry

Barbara von Merz
Cecilia Cook
Ed Jordan

Fidencio Duran

Georgetown Cultural Citizen Memorial Association

Humberto Hernandez-Haddad
IBC Bank

Leslie and Miye Cohen

Mariachi Clasico
Merry Wheaton

Meta Butler Hunt

Nelly Mendoza and Peruvian Artists

Shelley Jaffe

The Fowler Law Firm, PC
Tito's Handmade Vodka
Tom and Liba Stillman

Visual Arts League/JGALLERY

In 2026, AFFA will continue our mission to bring the love of folk art to the public. We invite you to join us.

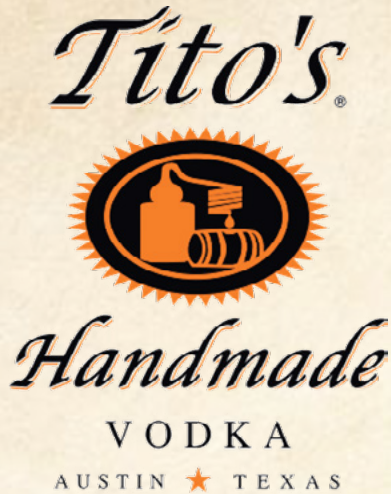
- Become a member
- Donate folk art
- Sponsor an educational event
- Volunteer to help with various tasks and events
- Host a folk art display
- Follow us on social media
- Share your expertise to grow our organization
- Be a folk art ambassador – help us reach new audiences in our community

Contact us: info@austinfriendsoffolkart.org

**JOIN
TODAY!**



Thank You to Our Sponsors!



Meta Butler Hunt

Karen E. Howard



**Regina B. Durden,
Bradshaw Solutions
Business Group**